



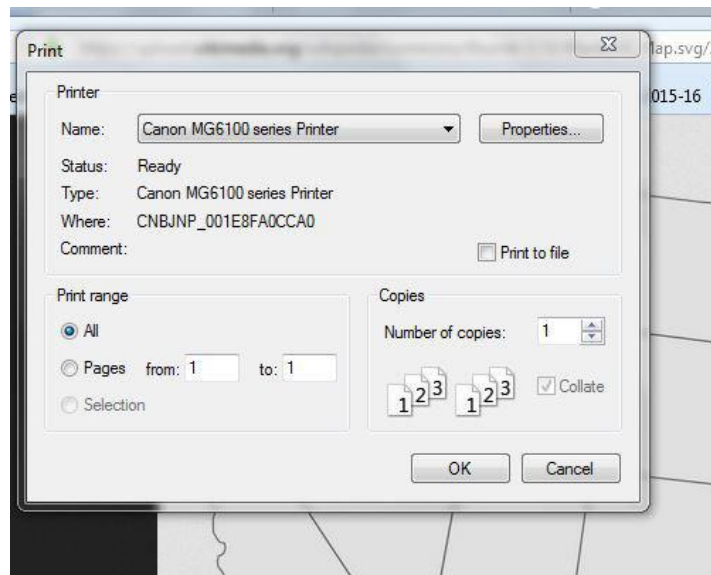
U.S. MAP QUILT TUTORIAL



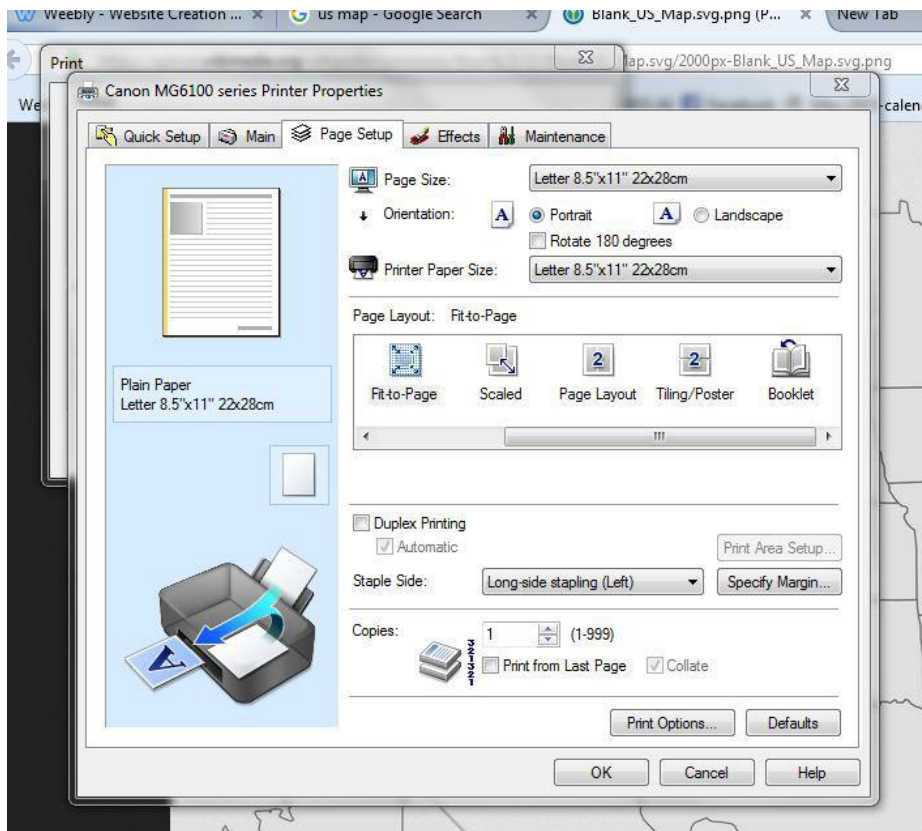
I've wanted to do a map quilt for a while - probably since the first time I saw one but hadn't gotten around to it. It ended up being the perfect project for a lay day at home watching movies.

The first thing you need to do is print a map out enlarged to poster size. I've included a [link to the map](#) I used but if you prefer a different map or want to do a different country or the world map, you can find a nice clear map and follow the same steps.

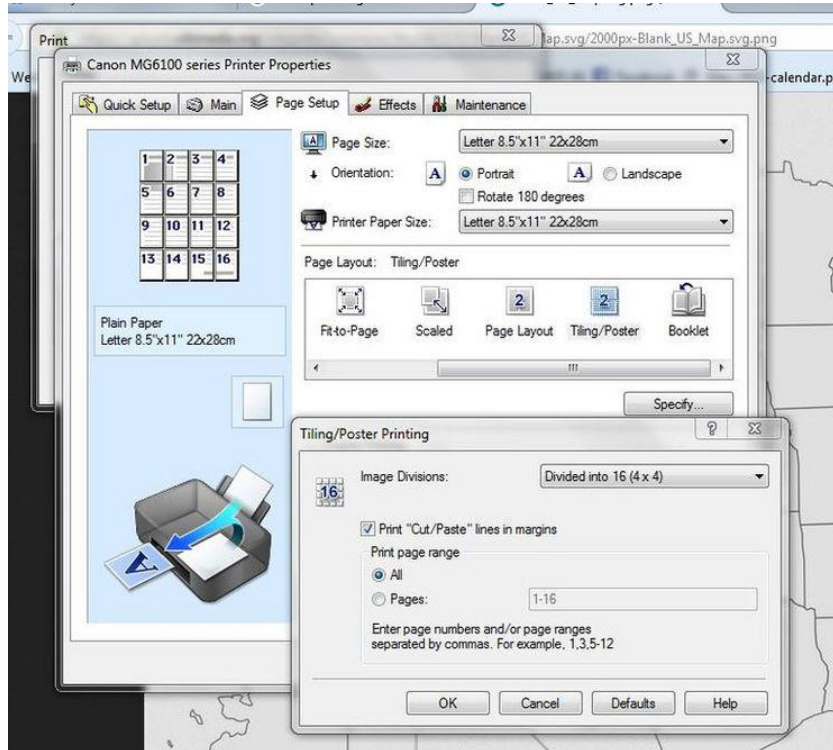
First, you will want to print and click the properties button.



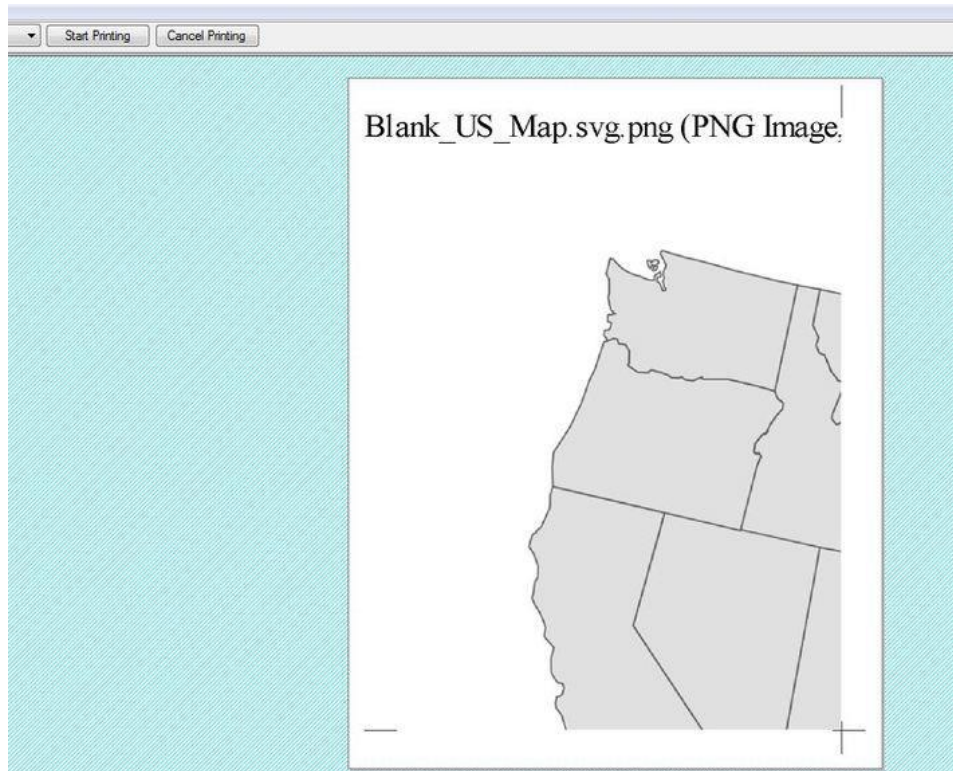
Next, select the Page Setup tab and scroll to the right to find the Tiling/Poster option.



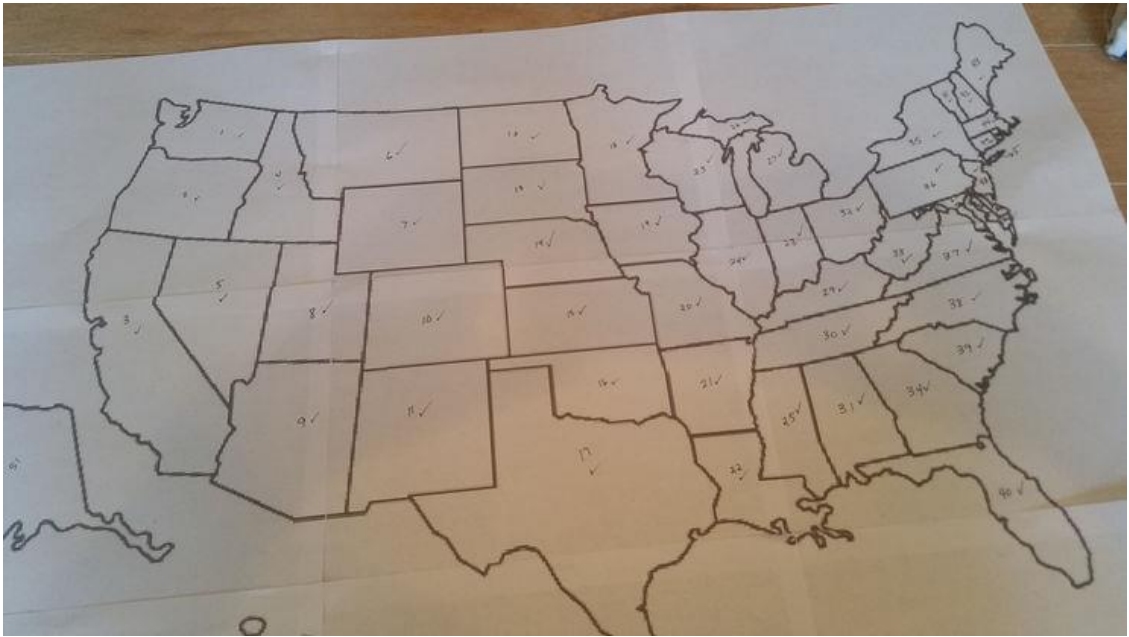
After selecting Tiling/Poster, you will see the Specify button and then change the Image Divisions to 16. If you go much smaller, the east coast states will be difficult.



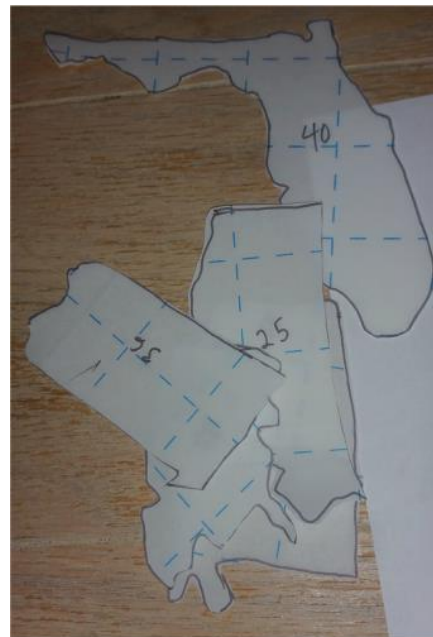
You will see lines on the edges for you to match up the pages correctly.



Here is mine all taped together.



I used Steam-A-Seam 2 and traced the shapes onto my Steam-A-Seam sheets. Then cut out. I numbered my map and pieces to easily keep track of some of my state shapes but you can label as you like.



Peel off one side of the paper on your fusible web and stick to back of fabric. Then cut out shape.



Put in place and either line pieces up or do a slight overlap of the pieces as shown below. Once your pieces are where you want them, press in place. I pressed in place as I went along.





The Steam-A-Seam 2 is pretty permanent so it's up to you if you want to stitch around each state or just quilt it at the end. I also added little hearts where we've lived as a family and where each of our family members were born.

Next, I cut out (46) 3-1/2 " squares and stitched together for the border. Then quilt as desired and bind to finish. I chose to just meander quilt the states rather than stitch around each one. I outline quilted the white area and then meandered again in the border. The final size is approximately 42" x 32".



